

BEREWOOD PRIMARY SCHOOL



Supporting Pupils with Medical Needs and First Aid

Spring 2022

Revised by School	September 2022
Responsible Person	Headteacher
Responsible Committee	Full governing body
Ratified by GB	March 2022
Next Review	Spring 2025



BEREWOOD PRIMARY SCHOOL

A distinctive vision

At Berewood Primary School we see education as a journey of discovery to fire the imagination, to establish a sense of self, and to gain the confidence to take full part in the wider world.

An ethos of local partnership

Berewood Primary School and the University of Chichester Academy Trust share the belief that education has the power to transform society. Our school is deeply rooted in its locality and encourages the involvement and interest of parents and the community, recognising that strong and vibrant communities have partnership and inclusion at their heart.

SUPPORTING PUPILS WITH MEDICAL NEEDS POLICY

Section 100 of The Children and Families Act 2014 places a duty on the Governing Body of Berewood Primary School and the University of Chichester Academy Trust to make arrangements for supporting children at Berewood Primary School with medical conditions. The Department of Education have produced statutory guidance 'Supporting Pupils with Medical Conditions' and we will have regard to this guidance when meeting this requirement.

We will endeavour to ensure that children with medical conditions are properly supported so that they have full access to education, including school trips and physical education. The aim is to ensure that all children with medical conditions, in terms of both their physical and mental health, are properly supported in school so that they can play a full and active role in academy life, remain healthy and achieve their academic potential.

It is our policy to ensure that all medical information will be treated confidentially by the Head teacher and staff. All administration of medicines is arranged and managed in accordance with the Supporting Pupils with Medical Needs document. All staff have a duty of care to follow and co-operate with the requirements of this policy.

Where children have a disability, the requirement of the Equality Act 2010 will apply.

Where children have an identified special need, the SEN Code of Practice will also apply.

We recognise that medical conditions may impact social and emotional development as well as having educational implications.

Key Roles and Responsibilities

Statutory Requirement: The governing body should ensure that the academy's policy clearly identifies the roles and responsibilities of all those involved in the arrangements they make to support children at the academy with medical conditions.

The Governing Body is responsible for:

- Ensuring that the academy's policy clearly identifies the roles and responsibilities of all those involved in the arrangements they make to support pupils at The Flying Bull Academy with medical conditions
- Making sure that arrangements to support pupils with medical conditions are in place and that the policy is fully implemented
- Ensuring that pupils with medical conditions are supported to enable the fullest participation possible in all aspects of school life, following individual care plans as required
- Ensuring that sufficient staff have received suitable training and are competent before they take on the responsibility to support pupils with medical conditions
- Ensuring that any members of academy staff who provide support to pupils with medical conditions are able to access information and other teaching materials as needed

The Head teacher is responsible for:

- Ensuring that the academy policy is developed and effectively implemented with partners
- Ensuring that all staff are aware of the policy for supporting pupils with medical conditions and understand their role in its implementation
- Ensuring that all staff who need to know are aware of the child's condition
- Ensuring that sufficient trained members of staff are available to implement the policy and deliver against all individual health care plans, including in contingency and emergency situations
- Ensuring the development of individual health care plans
- Ensuring that the staff are appropriately insured and are aware that they are insured to support pupils in this way
- Ensuring that the School Nurse Service is contacted in the case of any child who has a medical condition that may require support at the academy, but who has not yet been brought to the attention of the School Nurse
- Ensuring that relevantly trained staff are aware that they may be asked to provide support for pupils with medical conditions, including administering medicines.

Teachers and Support Staff are responsible for:

- Knowing what to do and responding accordingly when they become aware that a pupil with medical conditions needs help

- Receiving sufficient and suitable training and achieve the necessary level of competency before they take on the responsibility to support children with medical conditions

The School Link Nurse is responsible for:

- Notifying the academy when a child has been identified as having a medical condition which will require support.
- Supporting academy staff in implementing a health care plan
- Providing advice and liaison, including training

Local Arrangements

Identifying children with health conditions

Statutory Requirement: The Governing body will ensure that the policy sets out the procedures to be followed whenever the academy is notified that a pupil has a medical condition.

We will aim to identify children with medical needs on entry to the academy by working in partnership with parents/carers and following the process outlines in the document 'Process for identifying children with a health condition' produced by the Southern Health School Nursing Team in conjunction with the Children's Services Health and Safety Team (see Appendix A). We will use the 'Pupil Health Information Form' to obtain the information required for each child's medical needs in order to ensure that we have appropriate arrangements in place prior to the child commencing at the academy to support them accordingly.

Where a formal diagnosis is awaited or is unclear, we will plan to implement arrangements to support the child, based on the current evidence available for their condition. We will ensure that every effort is made to request some formal medical evidence and consultation with the parents.

Individual health care plans

Statutory Requirement: The Governing body will ensure that the academy's policy covers the role of individual healthcare plans, and who is responsible for their development in supporting children at the academy with medical conditions.

We recognise that Individual Healthcare Plans are recommended in particular where conditions fluctuate or where there is a high risk that emergency intervention will be needed, and are likely to be helpful in the majority of other cases, especially where medical conditions are long term and complex. However, not all children will require one. The academy, healthcare professional and parents/carers will agree based on evidence when a healthcare plan would be inappropriate or disproportionate.

Where children require an individual healthcare plan it will be the responsibility of the head teacher to ensure a plan has been written with academy staff, parents and relevant healthcare professionals.

A healthcare plan (and its review) may be initiated in consultation with the parent/carer, by a member of academy staff or by a healthcare professional. The head teacher will work in partnership with the parents/carer, and a relevant healthcare professional. Where a child has a special educational need identified in a statement or Educational Health Care (EHC) plan, this individual plan will be linked to or become part of that statement or EHC plan.

We may also refer to the flowchart contained within the document 'Process for identifying children with a health condition' (Appendix A) for identifying and agreeing the support a child needs and then developing the individual healthcare plan.

If a child is returning following a period of hospital education or alternative provision (including home tuition), we will work with the Local Authority and the Chichester Academy Trust to ensure that the individual healthcare plan identifies the support the child will need to reintegrate effectively.

Statutory Requirement: The governing body should ensure that all plans are reviewed at least annually or earlier if evidence is presented that the child's needs have changed. Plans should be developed with the child's best interests in mind and ensure that the academy assesses and manages the risks to the child's education, health and social well-being and minimise disruption.

All health care plans will be reviewed with parents/carers and with health professionals as appropriate, prior to the start of the Autumn term each year, or more frequently if a change in arrangements is required.

Statutory Requirement: When deciding what information should be recorded on individual healthcare plans, the governing body should consider the following:

- The medical condition, its triggers, signs, symptoms and treatments
- The pupil's resulting needs, including medication (dose, side effects, storage) and other treatments, time, facilities, equipment, testing, access to food and drink, where this is used to manage their condition, dietary requirements and environmental issues e.g. crowded corridors
- Specific support for the pupil's educational, social and emotional needs- for example, requirements for extra time to complete exams, use of rest periods or additional support for catching up with lessons or counselling sessions
- The level of support needed, including in emergencies
- Who will provide this support, their training needs, expectations of their role and confirmation of proficiency to provide support for the child's medical condition from a health care professional, and cover arrangements for when they are unavailable
- Who in the academy needs to be aware of the child's medical condition and the support required

- Arrangements for written permission from parents and the head teacher for medication to be administered by a member of staff
- Separate arrangements or procedures required for school trips or other activities outside of the normal timetable that will ensure that the child can participate, e.g. risk assessments
- Where confidentiality issues are raised by the parent / child, the designated individuals to be entrusted with information about the child's condition
- What to do in an emergency, including whom to contact, and contingency arrangements

Staff Training

Statutory Requirement: The Governing Body should ensure that this policy clearly sets out how staff will be supported in carrying out their role to support children with medical conditions, and how this will be reviewed. It should specify how training needs will be assessed and by whom training will be commissioned and provided.

The school policy should be clear that any member of academy staff providing support to a child with medical needs should have received suitable training.

Staff must not administer prescription medicines or undertake any health care procedures without the appropriate training (updated to reflect any individual healthcare plans)

All new staff, where relevant, will be inducted on the policy when they join the school through the academy's induction plans and systems. Records of this training will be kept on individual staff files and in the academy safeguarding record filing system.

All nominated staff will be provided with awareness training on the school's policy for supporting children with medical conditions, this will include what their role is in implementing the policy. This training will be carried out as required.

Relevant awareness training will be provided to staff by the head teacher as part of the induction meetings and agenda

We will retain evidence that staff have been provided the relevant awareness training on the policy by recording on training signature sheets and minutes and meeting notes.

Where required we will work with the relevant healthcare professionals to identify and agree the type and level of training required and identify where the training can be obtained from. This will include ensuring that the training is sufficient to ensure staff are competent and confident in their ability to support children with medical conditions. The training will include preventative and emergency measures so that staff can recognise and act quickly when a problem occurs and therefore allow them to fulfil the requirements set out in the individual healthcare plan.

Any training undertaken will form part of the overall training plan for the school and refresher awareness training will be scheduled at appropriate intervals agreed with the relevant healthcare professional delivering the training.

Staff training records are completed to document the type of awareness training undertaken, the date of training and the competent professional providing the training.

The Child's role

Statutory Requirement: The Governing body will ensure that the school's policy covers arrangements for children who are competent to manage their own health needs and medicines.

Where possible and in discussion with parents, children that are competent will be encouraged to take responsibility for managing their own medicines and procedures. This will be recorded in their individual healthcare plan. The healthcare plan will reference what will happen should a child who self-administers refuse to take their medication (this will normally be informing the parent/carer at the earliest opportunity).

Where possible we will endeavour to ensure that children can access their own medicines and relevant devices for quick self-medication. We will agree with relevant healthcare professionals and parents/carers the appropriate level of supervision required and document this in their healthcare plan.

Managing medicines on School Premises

Statutory Requirement: The Governing Body will ensure that the academy's policy is clear about the procedures to be followed for managing medicines.

The administration of medicines is the overall responsibility of the parents/carers. Where clinically possible we will encourage parents to ask for medicines to be prescribed in dose frequencies which enable them to be taken outside of academy hours. However, the head teacher is responsible for ensuring children are supported with their medical needs whilst on site, therefore this may include managing medicines where it would be detrimental to a child's health or academy attendance not to do so.

We will not give prescription or non-prescription medicines to any child without their parents/carers written consent (a 'parental agreement for setting to administer medicines' form will record this). In exceptional circumstances telephone contact may be used in order to obtain verbal permission, this will be followed up by written consent from the parents/carers at the end of the day.

A documented tracking system to record all medicines received in and out of the premises will be put in place. The tracking system used is the school's record sheet for the administration of medicines.

The name of the child, dose, expiry and shelf life dates will be checked before medicines are administered.

On occasions where a child refuses to take their medication the parents will be informed at the earliest available opportunity.

We will only accept medicines that are in date, labelled and in their original container as dispensed by the pharmacist and include instructions for administration, their dosage and storage. Insulin is the exception, which must still be in date but will generally be available inside an insulin pen or a pump, rather than its original container.

Children have their Inhalers stored within the relevant classroom for direct access if required. All Inhalers will be clearly marked with the child's name.

Controlled drugs will be securely stored in a non-portable container which only named staff will have access to. We will ensure that the drugs are easily accessible in an emergency situation. A record will be kept of any doses used and the amount of the controlled drug held within the school. There may be instances where it is deemed appropriate for a child to administer their own controlled medication. This would normally be at the advice of a medical practitioner and under the guidance of a trained adult.

Emergency medicines will be stored in a safe location but not locked away to ensure they are easily accessible in the case of an emergency.

Types of emergency medicines include:

- Injections of adrenaline for acute allergic reactions
- Inhalers for asthmatics
- Injections of Glucagon for diabetic hypoglycaemia

Other emergency medication ie. Rectal diazepam or Buccal Midazolam for major seizures will be stored in accordance with the normal prescribed storage instructions

We will only administer non-prescribed medicines on request from the parent/carer if they are in clearly identifiable packaging and only on a short term basis (Where the academy have concerns they will seek further guidance from their link School Nurse).

We will never administer aspirin or medicine containing Ibuprofen to any child under 16 years old unless prescribed by a doctor

Any homeopathic remedies to be administered will require a letter of consent from the child's doctor and will be administered at the discretion of the Head teacher.

Roles and responsibilities of staff supervising the administration of medicines

It is expected that in normal circumstances the child requiring medication will be known to the member of staff administering it. There should be a mechanism in place which enables staff administering medication to positively identify the child at the time of administration e.g. by confirming with the child where possible their name, date of birth and/or comparing with a

recent photo attached to the medication administration record / consent form. THERE MUST BE A CHECK WITH THE NAME ON THE CONSENT FORM.

When the child is not known or cannot give his or her details then a second check with a member of staff who does know the child and comparison with a recent photo or some other way of checking identity should be implemented.

As a general guideline before administering medication to a child the staff member should:

- Wash their hands
- Ensure that a drink is available if appropriate (some tablets can irritate and damage the throat and oesophagus if administered without a drink)
- Check the label on the medication
- Check the name of child
- Check that there is written consent from a parent/carer
- Check that the medication name and strength and dose instructions match the details on the consent form
- Check that the name on the medication label is that of the child being given the medication
- Check that the medication to be given is in date
- Check that the child has not already been given the medication
- Check the route of administration (e.g. by mouth, into ear/eye, rubbed on the skin)
- Check for any special instructions

Storage

All medication other than emergency medication will be stored safely in a lockable cabinet, where the hinges cannot be easily tampered with and cannot be easily removed from the premise.

Where medicines need to be refrigerated, they will be stored in the medical fridge in the medical room, in a clearly labelled airtight container. There must be restricted access to this refrigerator.

Children will be made aware of where their medicines are at all times and be able to access them immediately where appropriate.

Medicines such as asthma inhalers, blood glucose testing meters and adrenaline pens will always be readily available to children and not locked away. We will also ensure that they are readily available when outside of the school premises or on trips.

Storage of medication whilst off site will be secure. There will be appropriately trained staff present to administer day to day and emergency medication and if required, copies of individual health care plans will be taken off site to ensure appropriate procedures are followed.

Disposal

Any unused/unclaimed medication will be disposed of. This will take place within 4 weeks of the date of expiry. This may be carried out by returning unused medicines to a pharmacy or to the parent/carers. Parents/carers will be informed of this when the initial agreements are made to administer medicines.

Sharps boxes, if in use, will be in place for the disposal of needles. Collection and disposal of these will be arranged locally through the approved school contractor who will remove them from site as required.

Medical Accommodation

The medical room will be used as required for medical administration/treatment purposes. The location/room will be made available when required.

Record Keeping

Statutory Requirement: The governing body should ensure that written records are kept of all medicines administered to children.

A record of what has been administered including how much, when and by whom, will be recorded on a record of prescribed medicine form. The form will be kept on file. Any possible side effects of the medication will also be noted and reported to the parent/carers.

Emergency procedures

Statutory Requirement: The Governing body will ensure that the academy's policy sets out what should happen in an emergency situation.

Where a child has an individual healthcare plan, this will clearly define what constitutes an emergency and provide a process to follow. All relevant staff will be made aware of the emergency symptoms and procedures.

Where a child is required to be taken to hospital, a member of staff will stay with the child until their parents arrives, this includes accompanying them to hospital by ambulance if necessary (taking any relevant medical information, care plans etc that the school holds).

Appendix B sets out the procedures for contacting the Emergency Services

Day trips/off site activities

Statutory Requirement: The Governing body should ensure that arrangements are clear and unambiguous about the need to support pupils with medical conditions to participate in academy trips and visits, or in sporting activities, and not prevent them from doing so.

We will ensure that teachers are aware of how a child's medical condition will impact on their participation in any off site activity or day trip, but we will ensure that there is enough flexibility for all children to participate according to their own abilities within reasonable adjustments.

We will consider what reasonable adjustments we might make to enable children with medical needs to participate fully and safely on visits. We will carry out a risk assessment so that planning arrangements take account of any steps needed to ensure that pupils with medical conditions are included. We will consult with parents and pupils and advice from the relevant healthcare professional to ensure that pupils can participate safely.

Other issues

Defibrillator

The school has a Defibrillator which is outside the front of the school building and is for emergency use only. The school has informed the Ambulance Service that one is in place.

Emergency Salbutamol Inhalers

Emergency Salbutamol Inhalers can be bought by the academy for emergency use, and following the guidance sent to schools by the DfE in October 2014.

- The emergency salbutamol inhaler should only be used by children for whom written parental consent for use of the emergency inhaler has been given, who have either been diagnosed with asthma and prescribed an inhaler, or who have been prescribed an inhaler as reliever medication
- The inhaler can be used if the child's prescribed inhaler is not available (for example if it is broken or empty)
- The emergency inhaler is kept in the medical room in an airtight container and kept with the Department of Health Guidance on the use of Emergency salbutamol inhalers in school, September 2014
- Any parent of a child with asthma will be asked if they wish the inhaler to be used in an emergency, and a copy of all written consents will also be kept with the emergency inhaler
- An emergency kit will be kept with the emergency inhaler and this will include
 - At least two single-use plastic spacers compatible with the inhaler
 - Instructions on using the inhaler and spacers
 - Instructions on cleaning and storing the inhaler
 - Manufacturers information
 - A check list of the emergency inhaler, including batch number and expiry date
 - A note of arrangements for replacing the inhalers and spacers

Unacceptable practice

Statutory Requirement: The governing body will ensure that the school's policy is explicit about what practice is not acceptable.

Staff are expected to use their discretion and judge each child's individual healthcare plan on its merits, it is not generally acceptable practice to:

- prevent children from easily accessing their inhalers and medication and administering their medication when and where necessary;
- assume that every child with the same condition requires the same treatment;
- ignore the views of the child or their parents; or ignore medical evidence or opinion (although this may be challenged);
- send children with medical conditions home frequently or prevent them from staying for normal activities, including lunch, unless this is specified in their individual healthcare plans;
- if the child becomes ill, send them to the academy office or medical room unaccompanied or with someone unsuitable;
- penalise children for their attendance record if their absences are related to their medical condition, eg. hospital appointments;
- prevent pupils from drinking, eating or taking toilet or other breaks whenever they need to in order to manage their medical condition effectively;
- require parents, or otherwise make them feel obliged, to attend school to administer medication or provide medical support to their child, including with toileting issues. No parent should have to give up working because the academy is failing to support their child's medical needs; or prevent children from participating, or create unnecessary barriers to children participating in any aspect of academy life, including trips eg. by requiring parents to accompany the child.

Liability and Indemnity

Statutory Requirement: The governing body will ensure that the appropriate level of insurance is in place and appropriately reflects the level of risk.

Staff at the academy are indemnified under Berewood Academy insurance arrangements in place with our insurers.

The academy is self-insured and has extended this self-insurance to indemnify staff who have agreed to administer medication or undertake a medical procedure.

To meet the requirements of the indemnification, we ensure that school staff have parents/carers permission for administering medicines and members of staff will have had training on the administration of the medication or medical procedure..

Complaints

Statutory Requirement: The governing body will ensure that the academy's policy sets out how complaints may be made and will be handled concerning the support provided to pupils with medical conditions.

Should parents or children be dissatisfied with the support provided they can discuss their concerns directly with the Head teacher. If for whatever reason this does not resolve the issue, they may make a formal complaint via the school's complaints procedure.

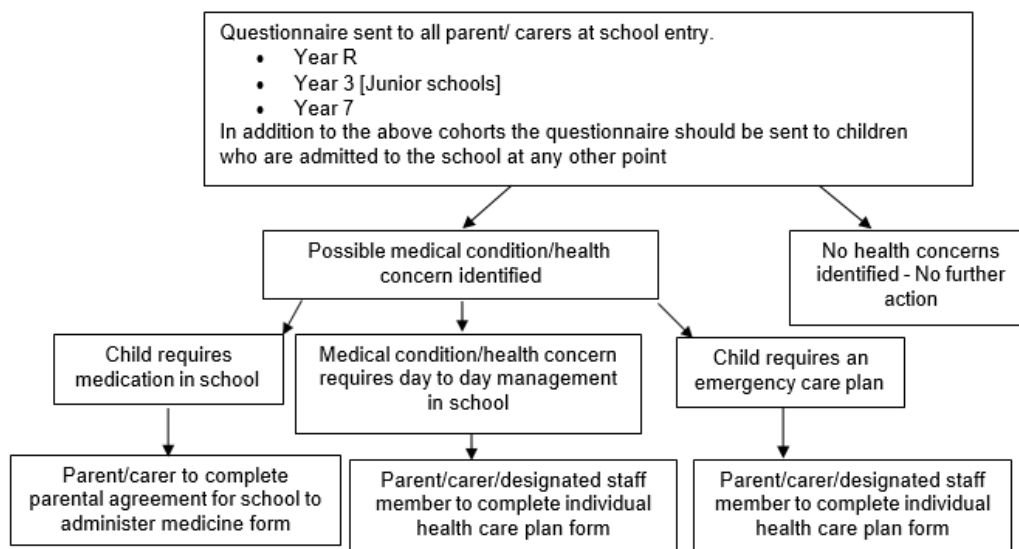
Monitoring and Evaluation

This policy will be reviewed by Governors in Spring 2022 and thereafter reviewed as part of the 3 year review cycle.

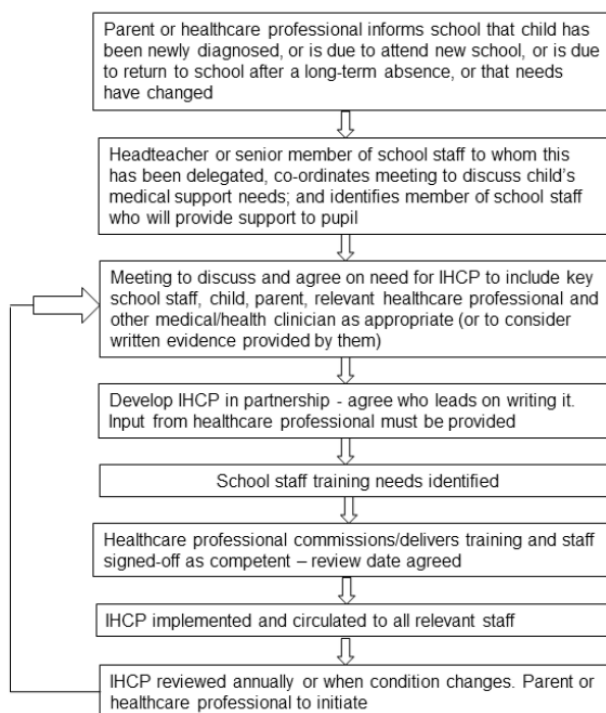
Appendix A

Process for identifying children or young people with a medical condition that may require support in school

Not all children with a health condition will require a health care plan in school however the form will help schools to ascertain which children require support. In addition to this schools may be informed at any other point by a parent or health professional if a child is newly diagnosed with a health condition.



Please see sample flowchart below from the Supporting pupils with medical conditions guidance



Appendix B: contacting emergency services

Request an ambulance - dial 999, ask for an ambulance and be ready with the information below.

Speak clearly and slowly and be ready to repeat information if asked.

1. Your telephone number 02394 006070
2. Your name
3. Your location as follows

Berewood Primary School
Kentidge Way
Waterlooville
Hants
Po7 3BE

4. State what the postcode is – please note that postcodes for satellite navigation systems may differ from the postal code
5. Provide the exact location of the patient within the school setting
6. Provide the name of the child and a brief description of their symptoms
7. Inform Ambulance Control of the best entrance to use and state that the crew will be met and taken to the patient
8. Put a completed copy of this form by the phone